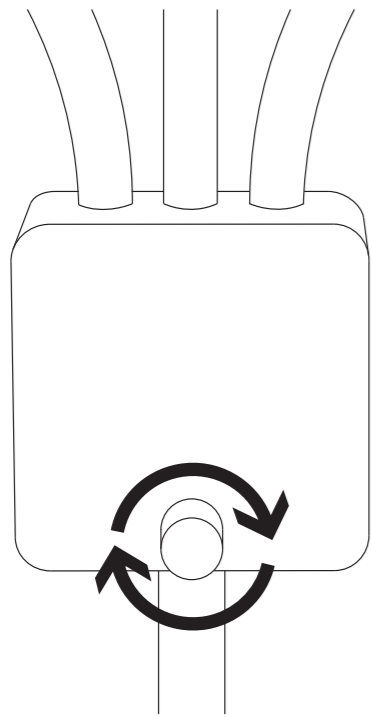


02



Turn knob to tighten luminaire onto stand

02

⚠ WARNING: FOR INDOOR USE ONLY

This device complies with Part 15 of the FCC Rules. Operation is subject to the following two conditions: (1) this device may not cause harmful interference, and (2) this device must accept any interference received, including interference that may cause undesired operation.

WARNING: Changes or modifications to this unit not expressly approved by the party responsible for compliance could void the user's authority to operate the equipment.

NOTE: This equipment has been tested and found to comply with the limits for a Class B digital device, pursuant to Part 15 of the FCC Rules. These limits are designed to provide reasonable protection against harmful interference in a residential installation. This equipment generates, uses, and can radiate radio frequency energy and, if not installed and used in accordance with the instructions, may cause harmful interference to radio communications. However, there is no guarantee that interference will not occur in a particular installation. If this equipment does cause harmful interference to radio or television reception, which can be determined by turning the equipment off and on, the user is encouraged to try to correct the interference by one or more of the following measures:

- Reorient or relocate the receiving antenna.
- Increase the separation between the equipment and receiver.
- Connect the equipment into an outlet on a circuit different from that to which the receiver is connected.
- Consult the dealer or an experienced radio TV technician for help.

BACK

GLAMCORTEC

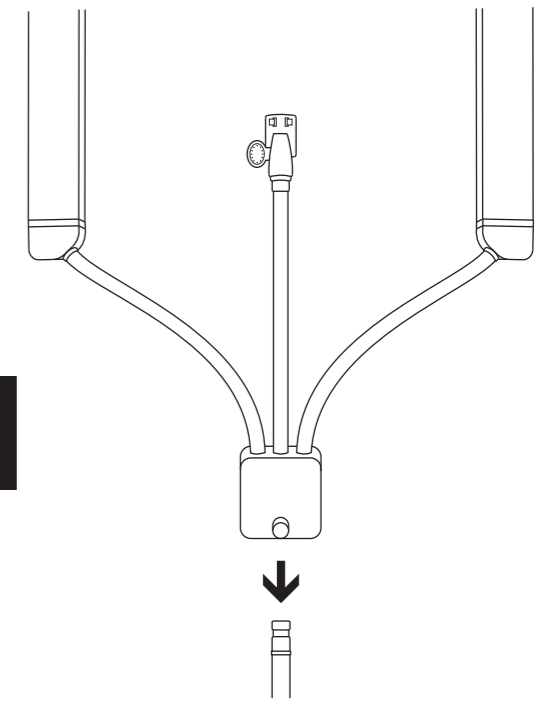
Multimedia Extreme Quick Start Guide

US and foreign Patent(s) Pending

Questions? Please email us anytime.
We will respond fast. We promise!
info@glamcortec.com

FRONT

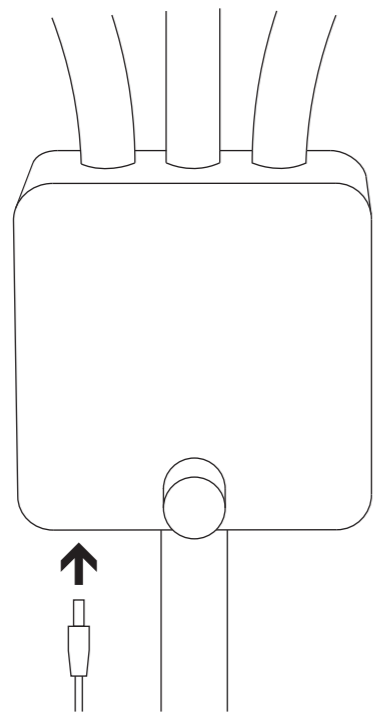
01



Insert bottom of luminaire onto stand

01

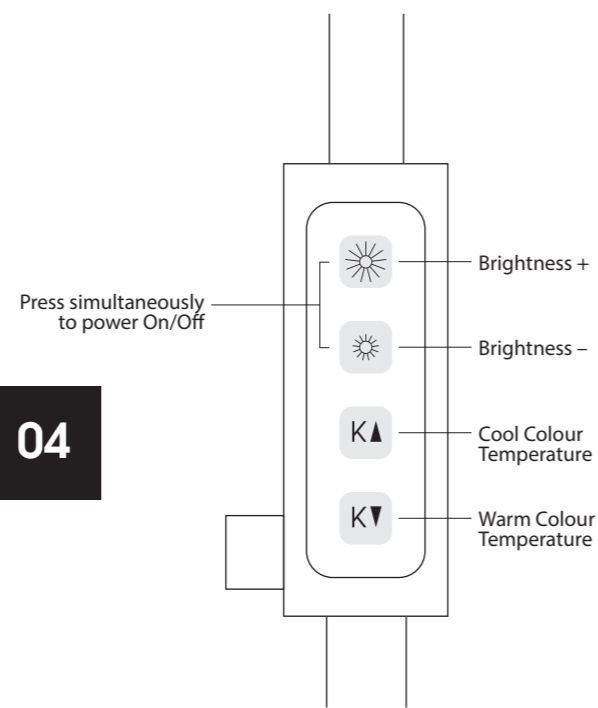
03



Insert power cord into the luminaire

03

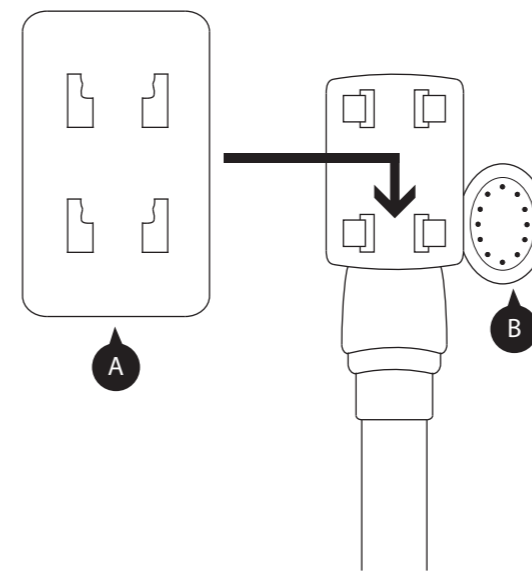
04



Lighting can be regulated on the side of the luminaire Optional: Attach accessory and slide it down until it 'clicks'

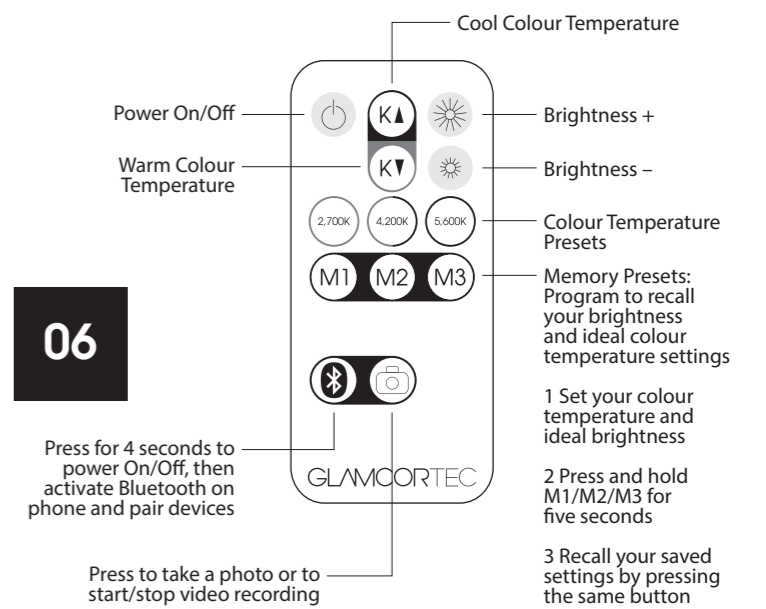
04

05



05

06



Adjust settings using the remote control

06